

## Montgomery County Public Schools

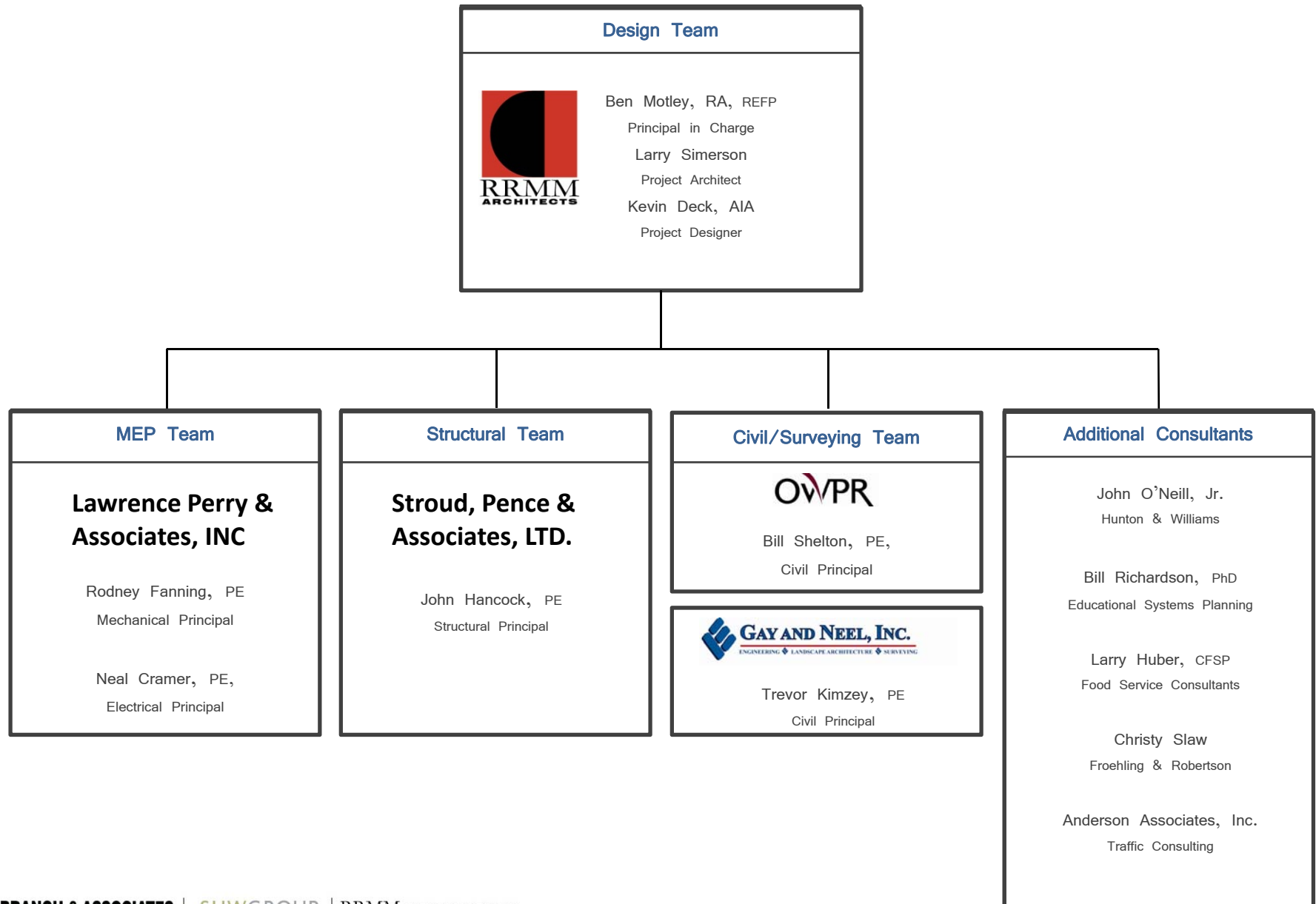
Auburn High School

Auburn Middle School

Blacksburg High School

June 14, 2011





# *Extensive Virginia-Based Project Experience*

---

Our Project Locations



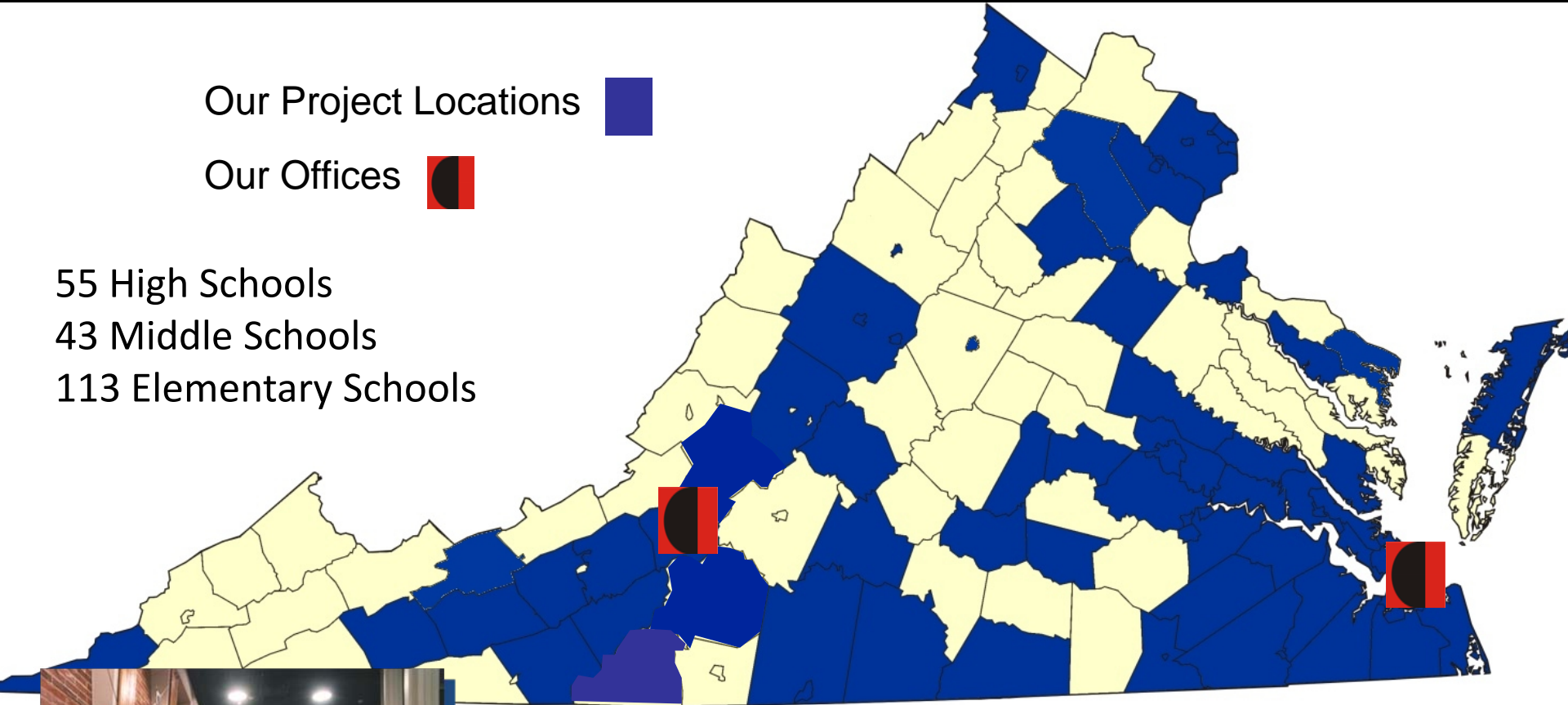
Our Offices



55 High Schools

43 Middle Schools

113 Elementary Schools



**Resources of a Large Firm, Yet  
Organized for the Personal  
Attention of a Smaller Firm**

# Design Philosophy

---

*“Anybody can learn to invent. All you have to do is have the will not to jump at the first solution because the really elegant solution might be just around the corner.”*

Ray Dolby



# Renovation Opportunities

Existing



**Keister Elementary Renovation  
Harrisonburg**

# Respect for Context



## Planning – Program Development

*To ensure that sufficient information is available... representatives... shall be made available to inquiries and meet with private entities that are considering [submitting].*

PPEA Model Guidelines (rev. 2009)

### Meetings Conducted

- Montgomery County Schools administrators
- Blacksburg HS, Auburn Middle & High School administrators
- Multiple Community Input Meetings

### Documents Studied

- Montgomery County Comprehensive Plan
- Montgomery County Schools Design Standards
- Blacksburg Middle School Special Use Permit
- Blacksburg High Stadium Special Use Permit
- Montgomery County School Board minutes
- Montgomery County Supervisors minutes



# Key Planning Criteria

---

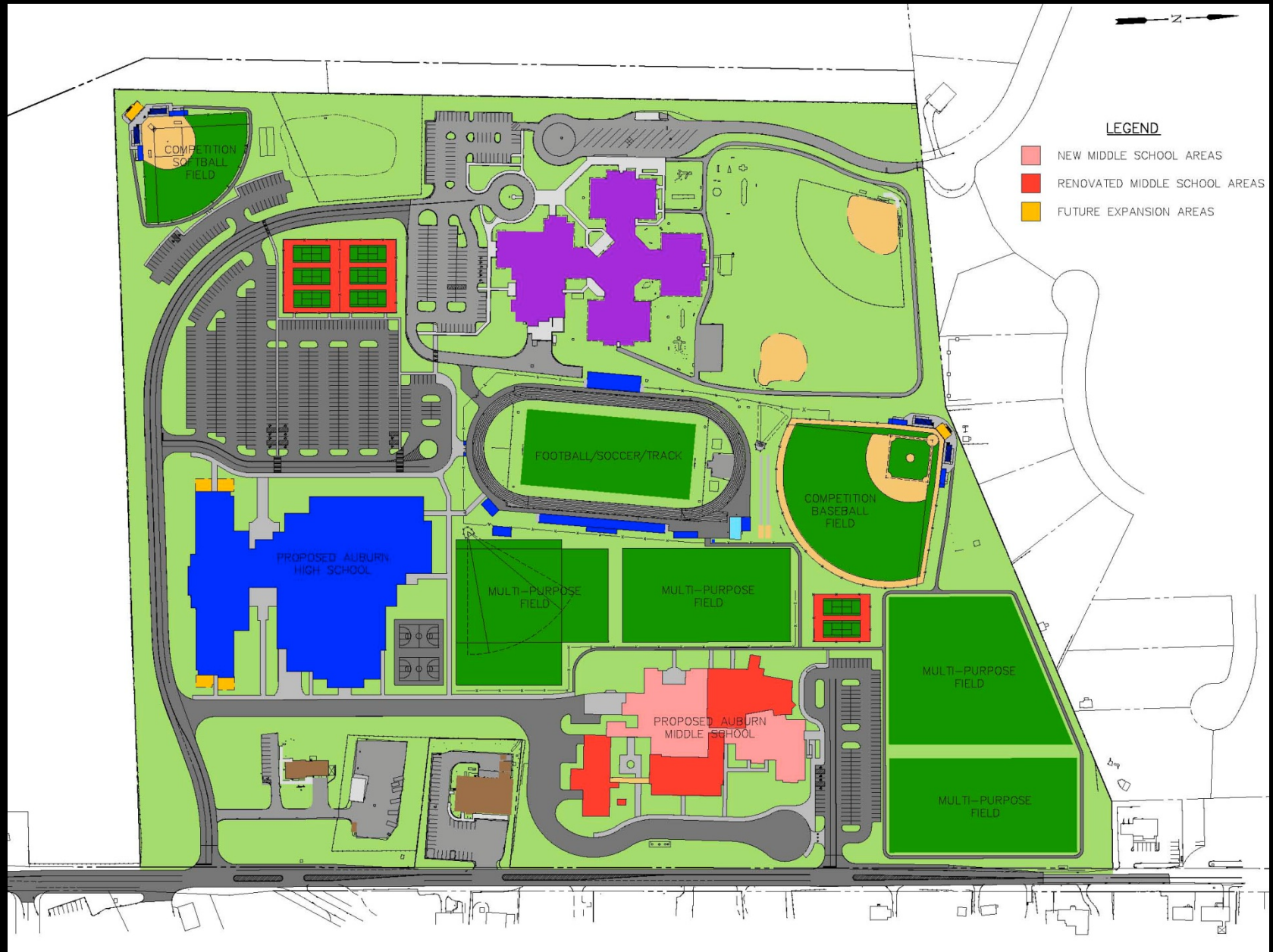
- New High School / Convert Existing HS to a new MS
- All Facilities on Site / Separate Buildings for MS and HS
- Shared Site Amenities (Parking and Athletic Fields)
- Cabin / Cannery Are Not Accommodated at Existing Location
- Masterplan Driven v. Funding Driven
- Re-Use What Makes Sense to Re-Use (Maximize Investment)
- Existing Middle School Will Be Demolished
  - Awkward Location
  - Poor Programmatic Fit, One Story
  - Excess Vehicular Entrances
  - Limited Land Area

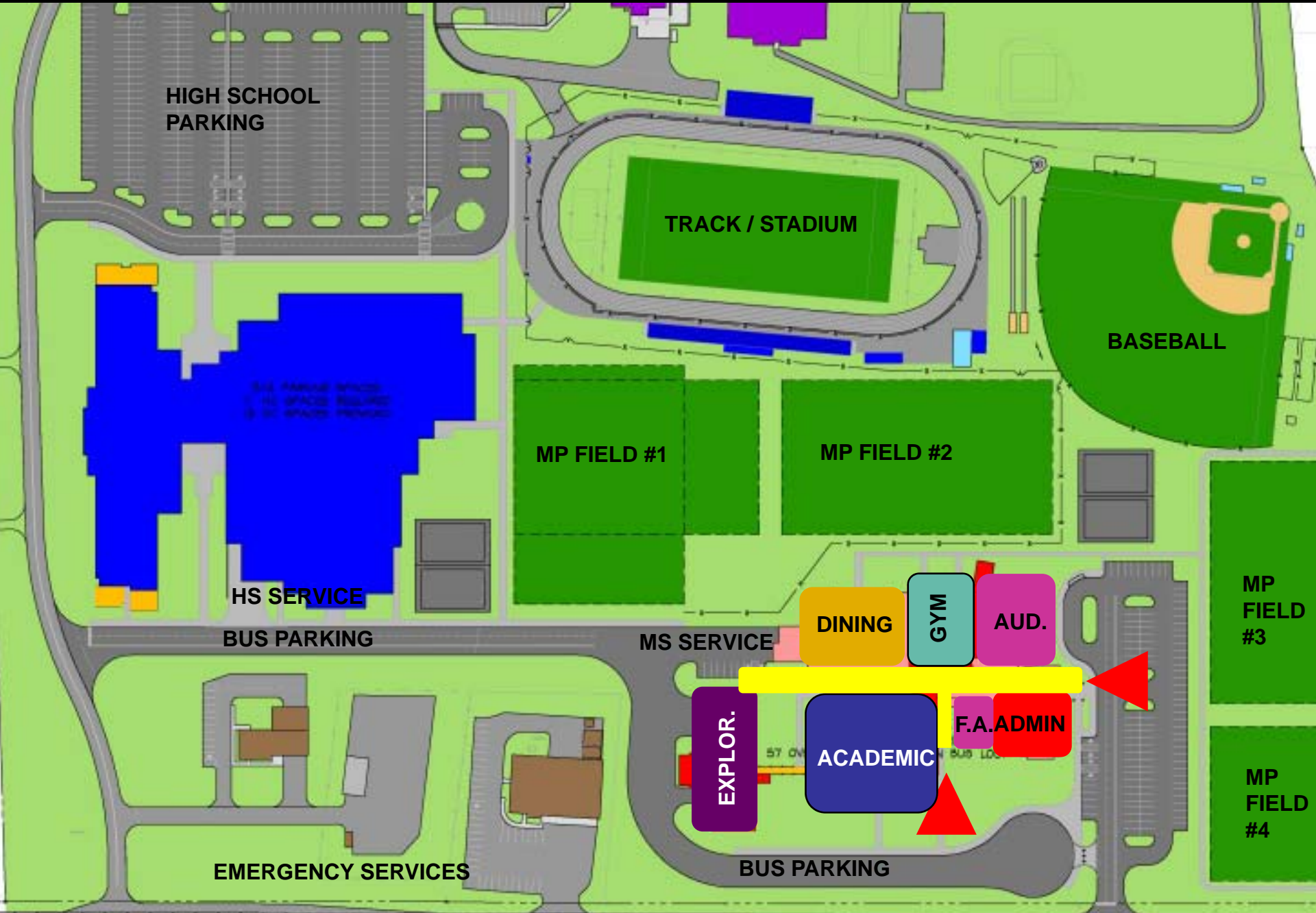
## Planning – Options

---

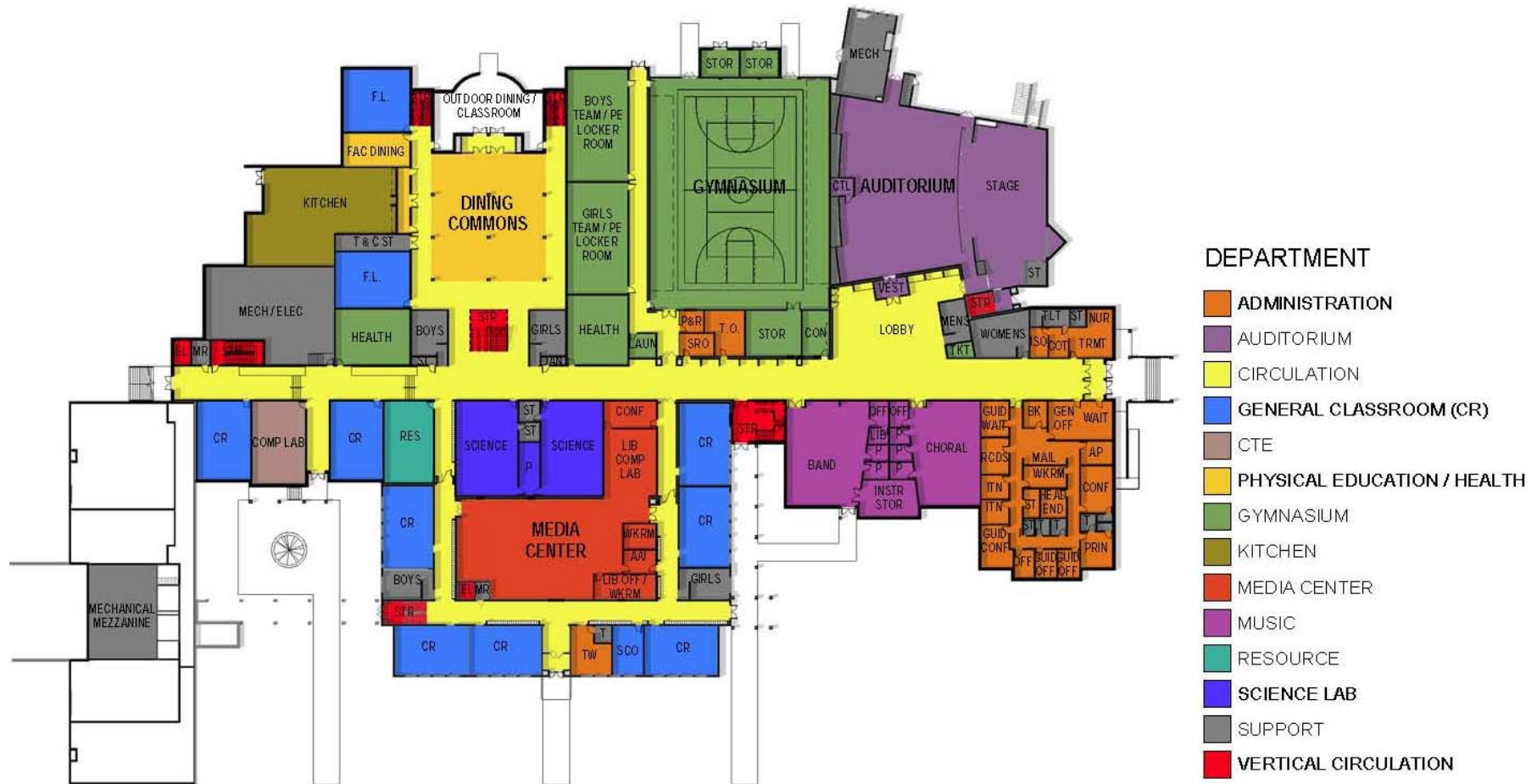
- |  |  |   |
|--|--|---|
| <ul style="list-style-type: none"><li>– New Blacksburg High School for 1400 + students</li><li>– New Auburn High School for 600 + students</li><li>– Auburn Middle School Renovation for 480 + students</li><li>– Complimentary site and community amenities</li></ul> | <ul style="list-style-type: none"><li>– New Blacksburg High School for 1600 + students</li><li>– New Auburn High School for 800 + students</li><li>– Auburn Middle School Renovation for 480 + students</li><li>– Complimentary site and community amenities</li></ul> | <ul style="list-style-type: none"><li>– Complimentary site and community amenities</li><li>– Additional amenities</li></ul> |
|--|--|---|

# Proposed Site Plan





# Planning – New Auburn MS Building Plan



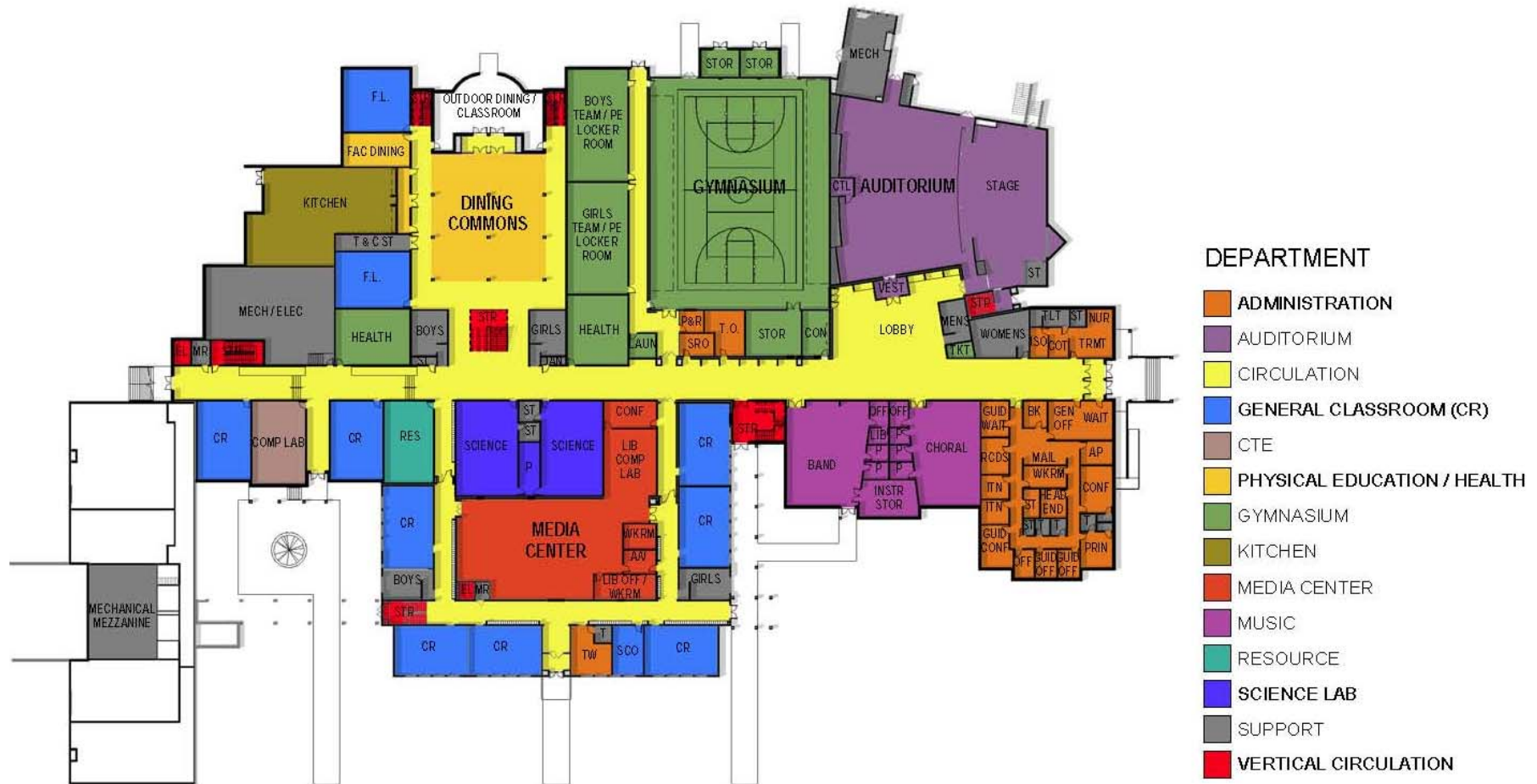
First Floor Plan

# Planning – New Auburn MS Building Plan



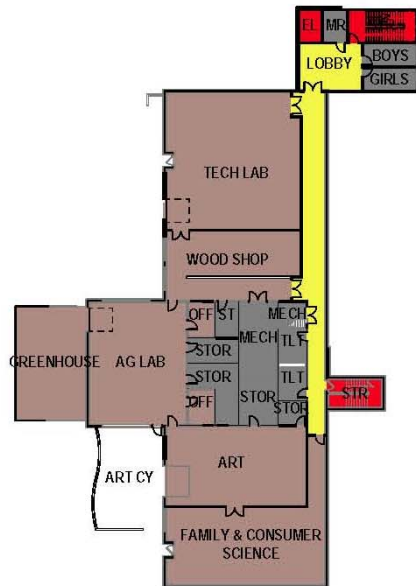
Second Floor Plan

# Planning – New Auburn MS Building Plan



First Floor Plan

# Planning – New Auburn MS Building Plan



Basement Floor Plan



## DEPARTMENT

- CIRCULATION
- CAREER & TECHNICAL EDUCATION (CTE)
- PHYSICAL EDUCATION / HEALTH
- SUPPORT
- VERTICAL CIRCULATION

## Middle School Exterior Views



## Middle School Exterior Views



## Middle School Exterior Views



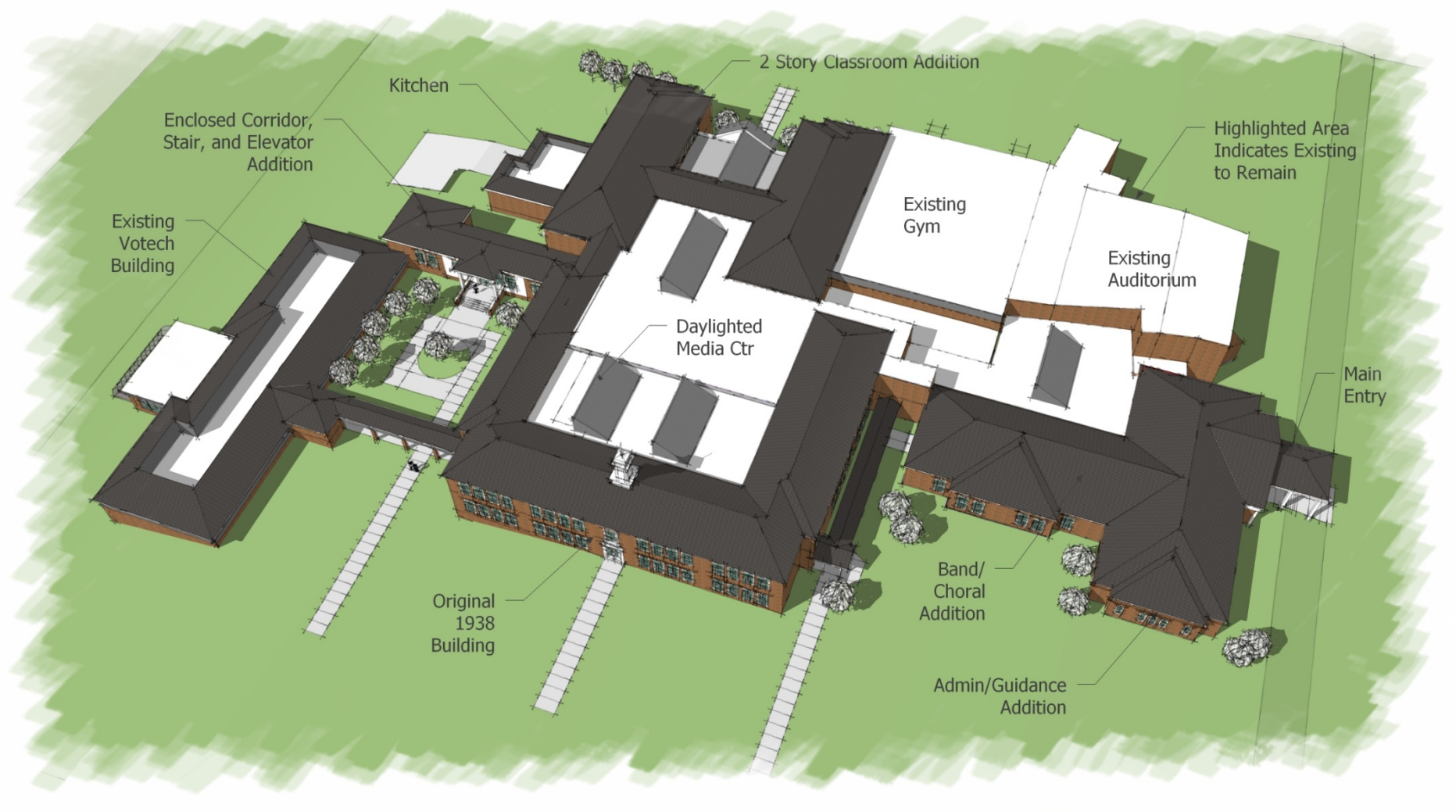
## Middle School Exterior Views

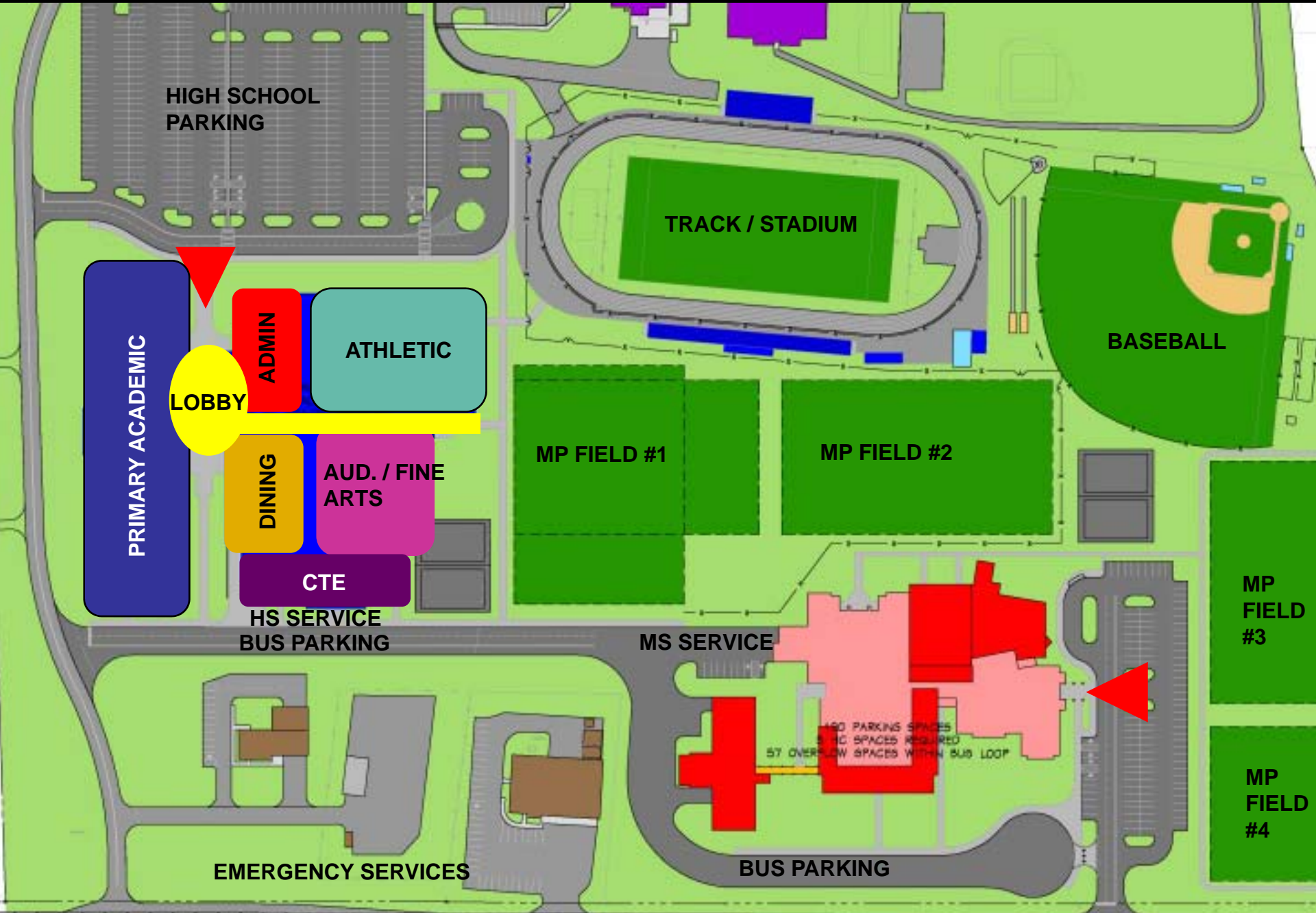


## Middle School Exterior Views



# Middle School Exterior Views

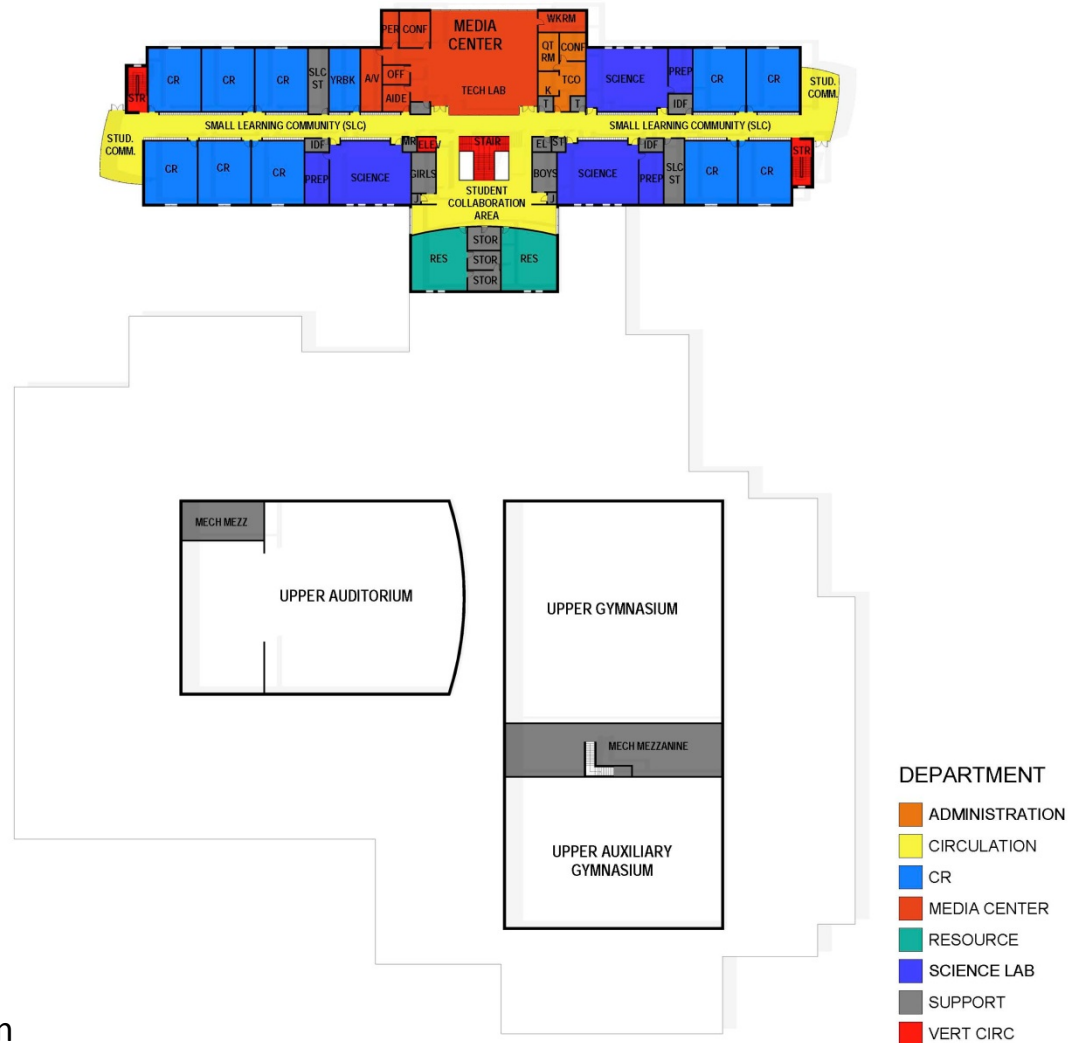




# Planning – New Auburn HS Building Plan



# Planning – New Auburn HS Building Plan



# High School Exterior Views



ppea process

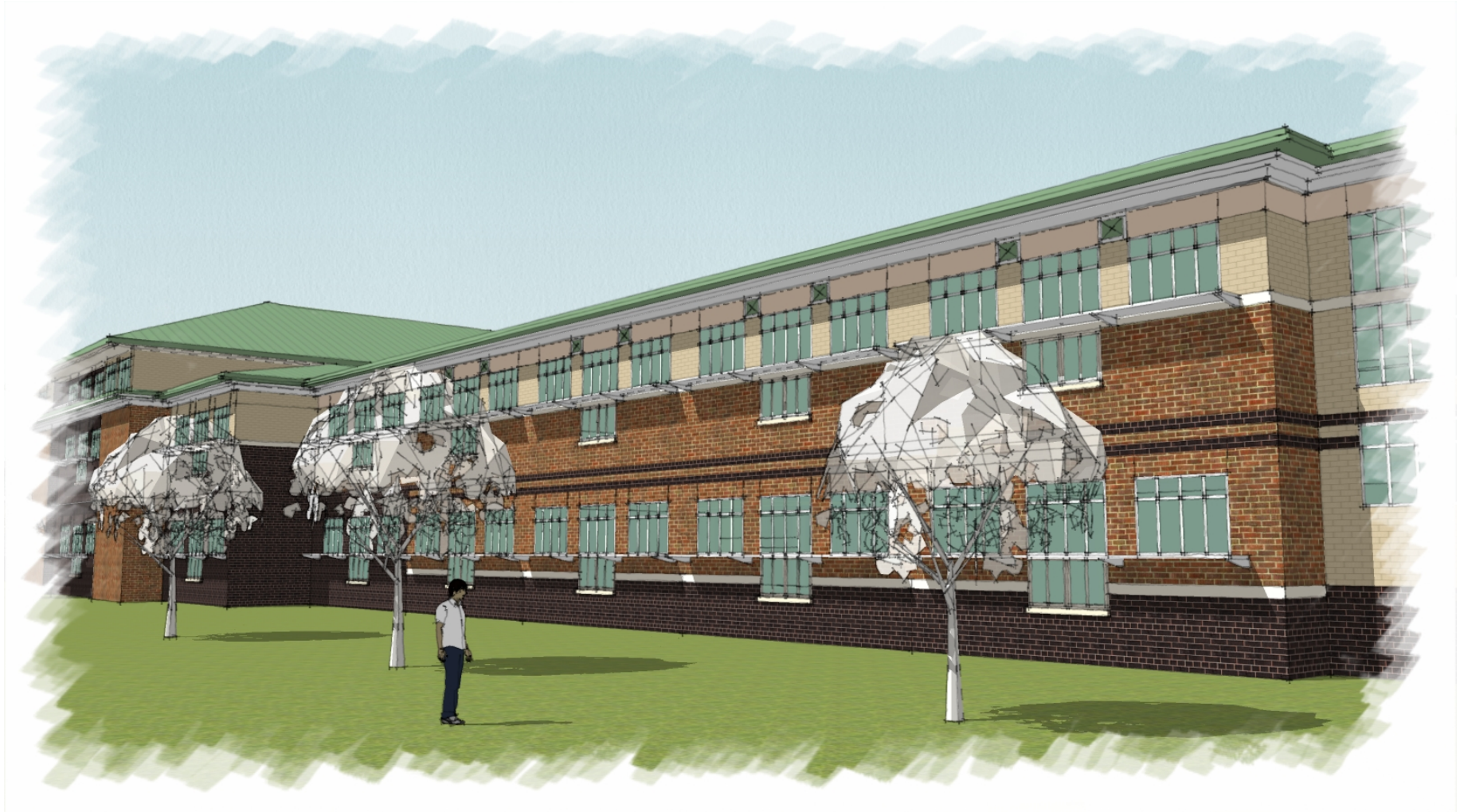
project team

project specifics

timeline

communication

# High School Exterior Views



ppea process

project team

project specifics

timeline

communication

# High School Exterior Views



# High School Exterior Views

